



# WA-4200, WA-4200-1

## 802.11ac 4x4 Wave 2 Access Point



BakPak  
Lite

### QUICK START GUIDE

# WA-4200 features

- 802.11ac dual-band 4×4 wireless technology
- Advanced Wave 2 wireless technology with MU-MIMO and beamforming
- Powered by PoE+ (or optional 12VDC 2A power adapter, sold separately)
- Single-AP to multi-AP cloud configuration with built-in BakPak Lite
- 2 Gigabit Ethernet ports
- For information on using the AP, go to [pkdge.co/wa4200-ug](http://pkdge.co/wa4200-ug).

## Interface access requirements

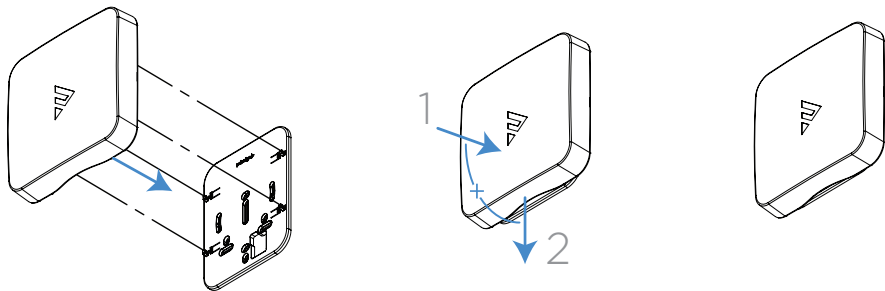
- Windows or Mac PC with an Ethernet port and Google Chrome or Mozilla Firefox

## Specifications and credentials

- Operation mode: Access Point
- IP address: If no DHCP server is detected, the default IP address is automatically set to **192.168.1.21**.
- Username/Password (default): **admin/password**
- SSIDs (default): **Pakedge\_Main** (5 GHz), **Pakedge\_Alt** (2.4 GHz), security/password: WPA2-PSK/**pakedgewireless**
- Guest SSIDs (default): **PakedgeGuest\_Main** and **PakedgeGuest\_Alt**, security/password: WPA2/**pakedgeguest**
- Factory default transmit power: 13 dBm for 2.4 GHz and 18 dBm for 5 GHz.
- Power: PoE+ or AC adapter (not included) 12VDC 2A



- 2 Slide the tabs in the AP into the slots on the bracket, then slide “down” (toward the port opening) until the AP is locked into place.

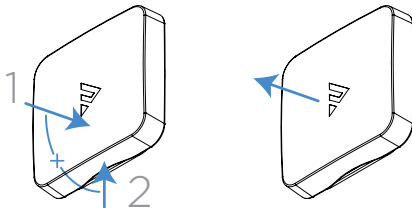


**Caution:** The WiFi AP is to be connected only to PoE networks without routing to the outside plant.

## Removing the AP from the bracket

### To remove the AP from the bracket:

- 1 While pressing the AP against the bracket, slide the AP “up” (away from the port opening) slightly, then pull the AP away from the bracket.



## Powering up

The AP can be powered by PoE or the optional AC power adapter (sold separately).

### To power up the access point:

- 1 Connect power using a POE injector or POE switch, or with the optional AC power adapter (sold separately). The access point should now be up and running with its default settings. It does not need to be configured to be functional. To make changes to the SSID and security settings, you need to access the AP using a web browser.

# Logging in to the access point

## To log in to the access point:

- 1 Connect the access point to your PoE switch with an Ethernet cable.
- 2 Log in to your Pagedge router to find the IP address assigned to the access point under the *DHCP Client Table*.  
**Tip:** If you do not have a router in your network that distributes IP addresses, you can try to access the access point through its default IP address of **192.168.1.21**.
- 3 Enter that IP address into a web browser to open the access point interface. The *Sign In* page opens.  
**Note:** Because the AP uses self-signed certificates for secure connection to the web browser, a security message will appear. There is no risk in proceeding to the AP's web interface, and communications will remain secure.
- 4 In the *username* box, type **admin**. In the *password* box, type **password**, then click **Sign In**. The first time you log in, the *Configure* page opens.

- 5 Enter and verify a new username and password (required) before continuing, then click **Apply** to complete the setup.

Overview Connections **Configure** Backup/Restore Logs Advanced

**⚠ This product is not managed by BakPak** [Click here to enroll](#)

**Edit Login Credentials**

Username:  Current Password:  New Password:

**General Device Information**

Friendly Device Name:  Device Location:

**Caution:** For international models, you must change the *Country Code* (a drop-down list defaulting to **GB - United Kingdom**), to the specific country of operation.

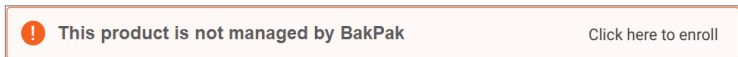
**Note:** Refer to the user guide ([pkdge.co/wa4200-ug](http://pkdge.co/wa4200-ug)) for detailed configuration information.

# Registering your device with BakPak Lite

You can connect your access point to your existing BakPak account or create a new account to manage all of your BakPak network management agents.

## To register your device to your BakPak account:

- 1 In the device's *Connections* tab, to the right of the “This product is not managed by BakPak” message, click **Click here to enroll**.



- 2 Follow the on-screen instructions to complete your device registration.

A screenshot of a web form titled "Register Management Agent" in blue. Below the title, a note states "Only BakPak Lite supported devices can be manually added." The form contains three input fields: the first is labeled "SERIAL NUMBER" and is empty; the second is labeled "MAC ADDRESS" and is empty; the third is labeled "AGENT NAME" and contains the text "Name". At the bottom of the form, there are two buttons: a blue button labeled "Register Agent" and a grey button labeled "Cancel".



# Creating a BakPak site for WA Series APs

To begin managing and configuring the AP, you need to create a BakPak site for it.

## To create a BakPak site:

- 1 Log in to your BakPak account, then click **Add Site** to create a site.
- 2 In the *Management Agent* list, select the first WA-4200, complete the site information, then click **OK**.

[Add management agent site](#)  
Complete the basic information about this site. Note that a Management agent is the network device which hosts BakPak, such as an RK-1, or an NK-1. When you are finished, click "Next" and BakPak will then scan and detect all the devices on that site.

MANAGEMENT AGENT

WA-4200

SITE NAME \*

SITE ADDRESS

DEVICE NAME \*

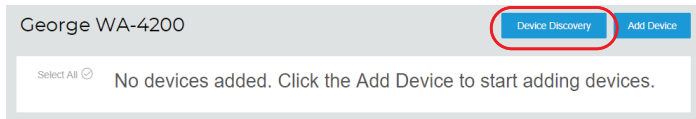
DEVICE LOCATION

## Adding WA Series APs to the site

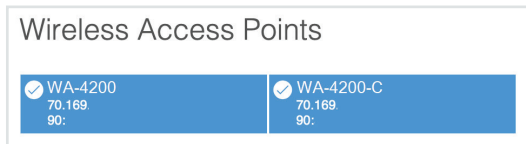
After the BakPak site is created, the WA-4200 will act as the “master AP” for adding more WA-4200 Series APs to the site. For the full multi-AP deployment guide, see [pkdge.co/wa4200-multi](http://pkdge.co/wa4200-multi).

### To add APs and provision them with the existing configuration:

- 1 Make sure that the master AP is already configured (through the local UI or BakPak), and that the additional APs are turned on for at least five minutes and connected to your network.
- 2 In BakPak, select the new WA-4200 site, then click **Device Discovery**.



Any additional WA-4200 Series APs are discovered and appear as tiles that can be selected (already selected by default).



- 3 Click **OK**. The APs are added to the site.
- 4 To apply the master AP's settings to the new APs, in the BakPak site select the master AP, then complete the site information and click **Save & Apply Multiple** at the bottom. The settings are copied to the new APs.

# Technical Support

For technical help:

[www.pakedge.com](http://www.pakedge.com)  
[support@pakedge.com](mailto:support@pakedge.com)  
(650) 385-8703

For regulatory information:

[www.pakedge.com/regulatory](http://www.pakedge.com/regulatory)



11734 S. Election Road  
Draper, UT 84020  
Main: (650) 385-8700 Fax: (650) 685-5520

[www.pakedge.com](http://www.pakedge.com)  
[sales@pakedge.com](mailto:sales@pakedge.com)  
©2019 Control4. All rights reserved.

Latest version at  
[pkdge.co/wa4200-qsg](http://pkdge.co/wa4200-qsg)



200-00636-A 2019-11-14 MS